

THE CHESTNUT

3043 SQ. FT.



ELEVATION A



ELEVATION B

THE CHESTNUT

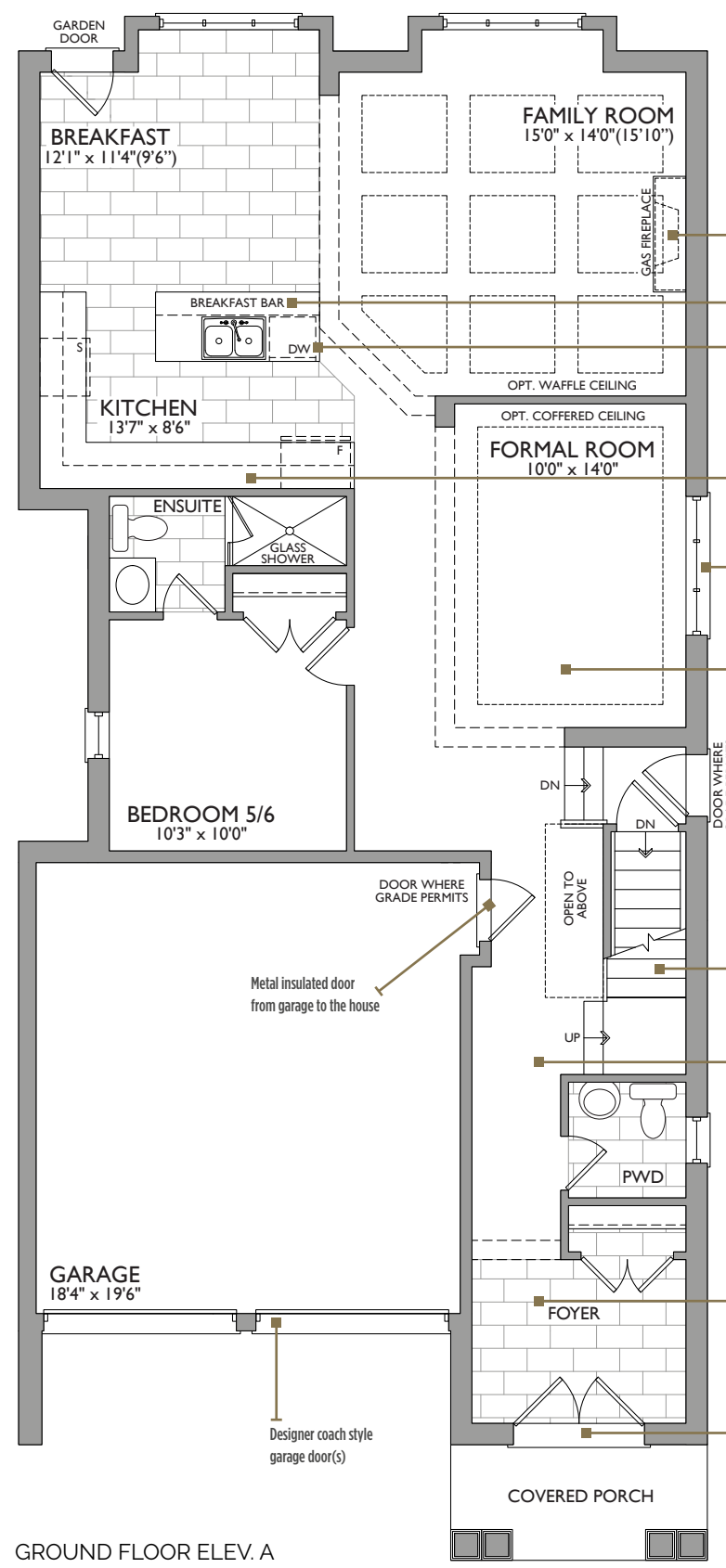
3043 SQ. FT.



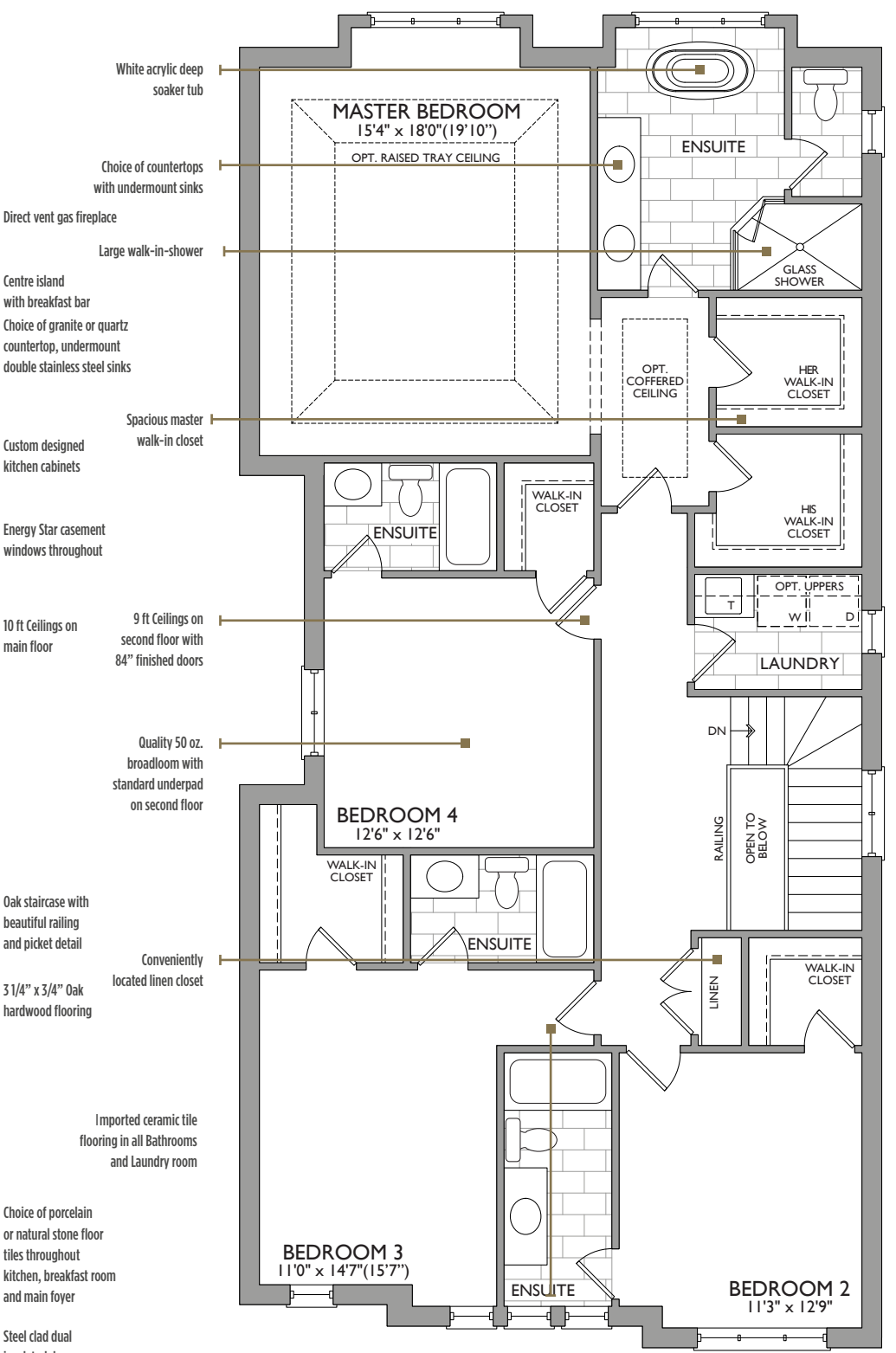
ELEVATION A



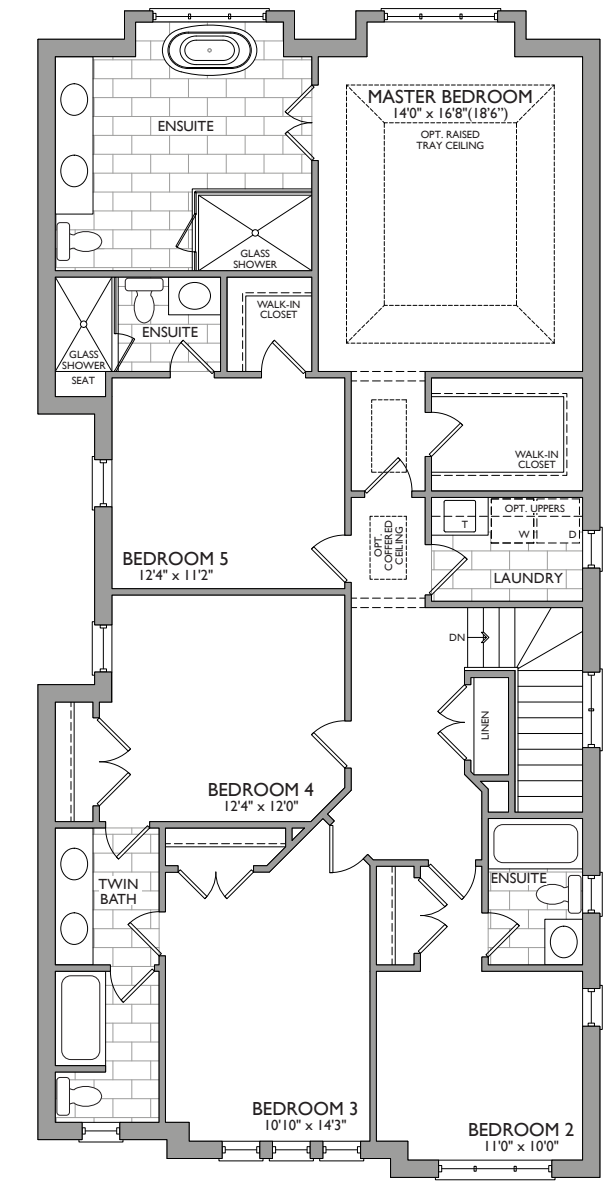
ELEVATION B



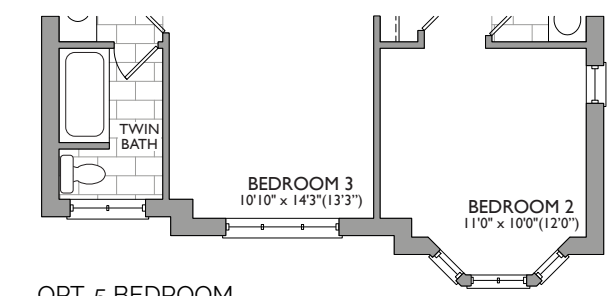
GROUND FLOOR ELEV. A



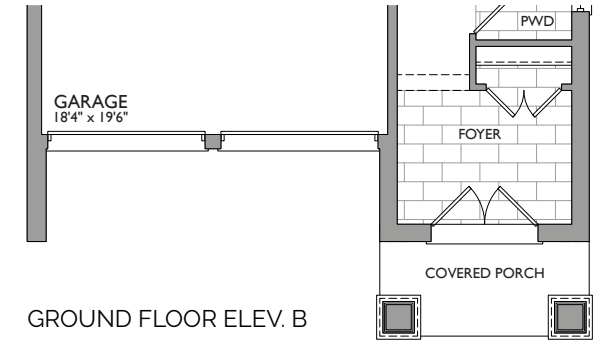
SECOND FLOOR ELEV. A



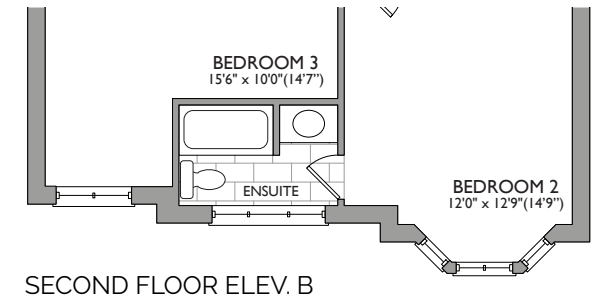
OPT. 5 BEDROOM SECOND FLOOR ELEV. A



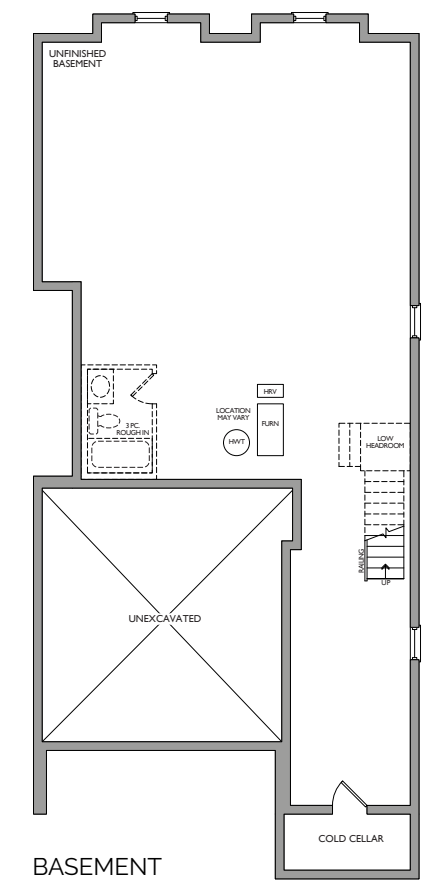
OPT. 5 BEDROOM SECOND FLOOR ELEV. B



GROUND FLOOR ELEV. B



SECOND FLOOR ELEV. B



BASEMENT

- White acrylic deep soaker tub
- Choice of countertops with undermount sinks
- Direct vent gas fireplace
- Large walk-in-shower
- Centre island with breakfast bar
- Choice of granite or quartz countertop, undermount double stainless steel sinks
- OPT. WAFFLE CEILING
- OPT. COFFERED CEILING
- Spacious master walk-in closet
- Custom designed kitchen cabinets
- Energy Star casement windows throughout
- 10 ft Ceilings on main floor
- 9 ft Ceilings on second floor with 84" finished doors
- Quality 50 oz. broadloom with standard underpad on second floor
- Oak staircase with beautiful railing and picket detail
- 3 1/4" x 3/4" Oak hardwood flooring
- Imported ceramic tile flooring in all Bathrooms and Laundry room
- Choice of porcelain or natural stone floor tiles throughout kitchen, breakfast room and main foyer
- Steel clad dual insulated doors

Actual usable space may vary from stated area. Dimensions, specifications and architectural detailing are subject to changes without notice E. & O.E. All renderings and landscape features are Artist's concept.

